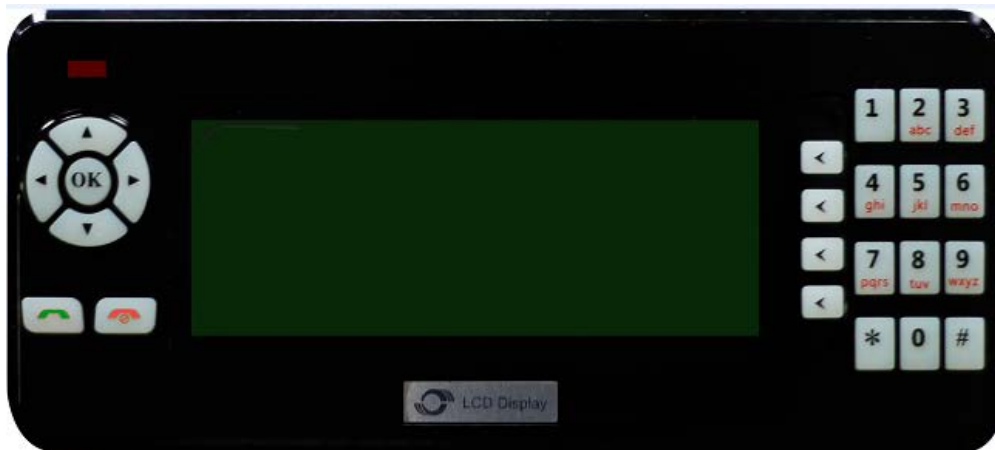


|             |                        |               |                          |
|-------------|------------------------|---------------|--------------------------|
| File Name   | MEITRACK A21 Update    | Creator       | Kyle Lv                  |
| Project     | A21                    | Creation Date | 2012-07-16               |
|             |                        | Update Date   | 2013-06-26               |
| Sub Project | Accessory Update Guide | 页 Page        | 1 of 6                   |
| Revision    | V1.1                   | Confidential  | External Documentation 档 |

# MEITRACK® LCD Display

## A21



## Instructions for Firmware Updated



|             |                        |               |                          |
|-------------|------------------------|---------------|--------------------------|
| File Name   | MEITRACK A21 Update    | Creator       | Kyle Lv                  |
| Project     | A21                    | Creation Date | 2012-07-16               |
|             |                        | Update Date   | 2013-06-26               |
| Sub Project | Accessory Update Guide | 页 Page        | 2 of 6                   |
| Revision    | V1.1                   | Confidential  | External Documentation 档 |

---


## Content

|    |                                     |   |
|----|-------------------------------------|---|
| 1. | Copyright and Disclaimer .....      | 3 |
| 2. | Install USB232 Driver.....          | 3 |
| 3. | Check Firmware Version .....        | 3 |
| 4. | Connect A21 to PC.....              | 4 |
| 5. | Select the firmware to upgrade..... | 4 |
| 6. | Upgrade .....                       | 5 |

|             |                        |               |                          |
|-------------|------------------------|---------------|--------------------------|
| File Name   | MEITRACK A21 Update    | Creator       | Kyle Lv                  |
| Project     | A21                    | Creation Date | 2012-07-16               |
|             |                        | Update Date   | 2013-06-26               |
| Sub Project | Accessory Update Guide | Page          | 3 of 6                   |
| Revision    | V1.1                   | Confidential  | External Documentation 档 |

## 1. Copyright and Disclaimer

Copyright © 2013 MEITRACK. All rights reserved.

MEITRACK and  are trademarks that belong to Meitrack Group

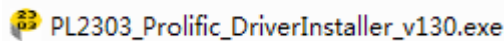
The user manual may be changed without prior notification.

This upgrade guide, or any part thereof, shall not be reproduced for any purpose whatsoever without the written authorization of Meiligao (MEITRACK), or transmitted in any form, either electronically or mechanically, including photocopying and recording.

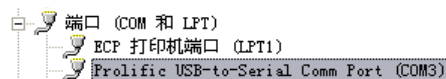
In no event shall Meiligao (MEITRACK) be liable for direct, indirect, special, incidental, or consequential damages (including but not limited to economic loss, personal injury, and loss of asset and property) arising out of the use or inability or illegality to use the product or documentation.

## 2. Install USB232 Driver

- 1) Find **USB232 Driver** folder from CD



- 2) Get **exe** file and install it;
- 3) After installation, connect USB232 cable to PC's USB port;
- 4) Open Device Manager, You can find ' Prolific USB-to-Serial Comm Port ' (e,g,COM3);



## 3. Check Firmware Version

Please check A21 version info in "Settings" – "Version"

SN : 02541236657  
A21 : FW1.08\_CN

|             |                        |               |                          |
|-------------|------------------------|---------------|--------------------------|
| File Name   | MEITRACK A21 Update    | Creator       | Kyle Lv                  |
| Project     | A21                    | Creation Date | 2012-07-16               |
|             |                        | Update Date   | 2013-06-26               |
| Sub Project | Accessory Update Guide | 页 Page        | 4 of 6                   |
| Revision    | V1.1                   | Confidential  | External Documentation 档 |

#### 4. Connect A21 to PC

As shown in the picture:



#### 5. Select the firmware to upgrade

Double click the software below for upgrade



A21\_FW1.09\_CN

File Name: A21\_FW1.09\_CN\_20120712

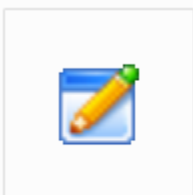
A21: The model which this firmware applies for

FW1.09: FW means FIRMWARE; 1.09 means the firmware's version number

CN: Chinese version

20120712: Release date (The date is only shown on the name of zip file)

Note: For English version, please select the firmware version with "EN", as shown in the picture:

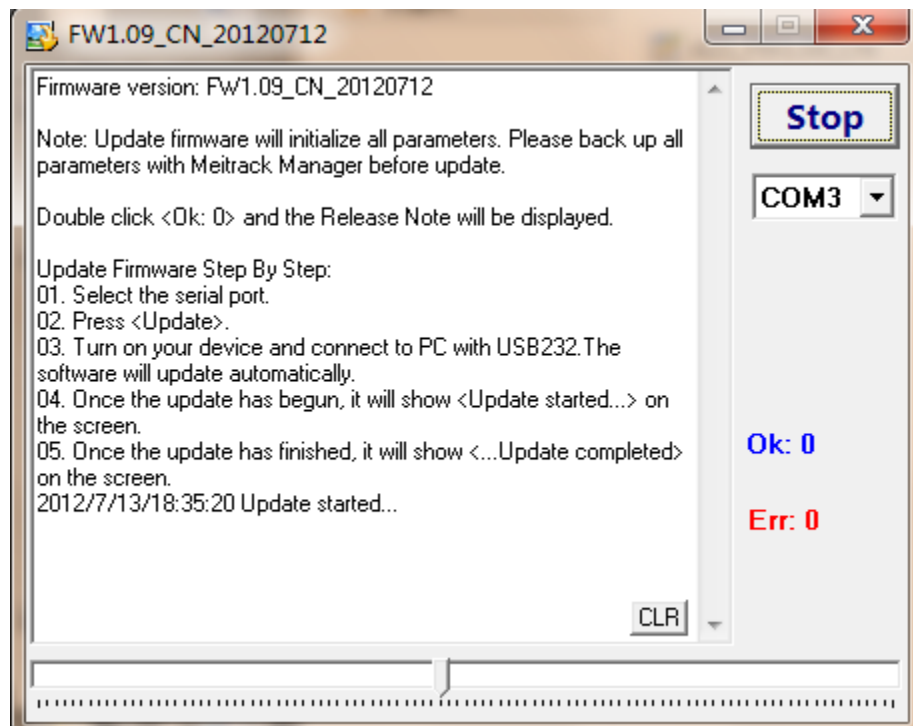
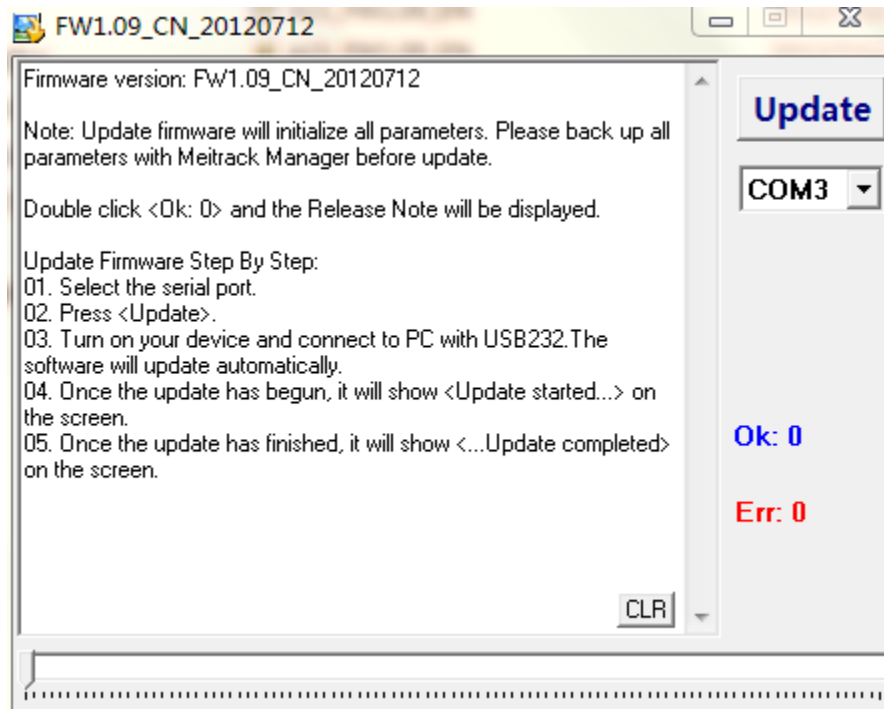


A21\_FW1.09\_EN

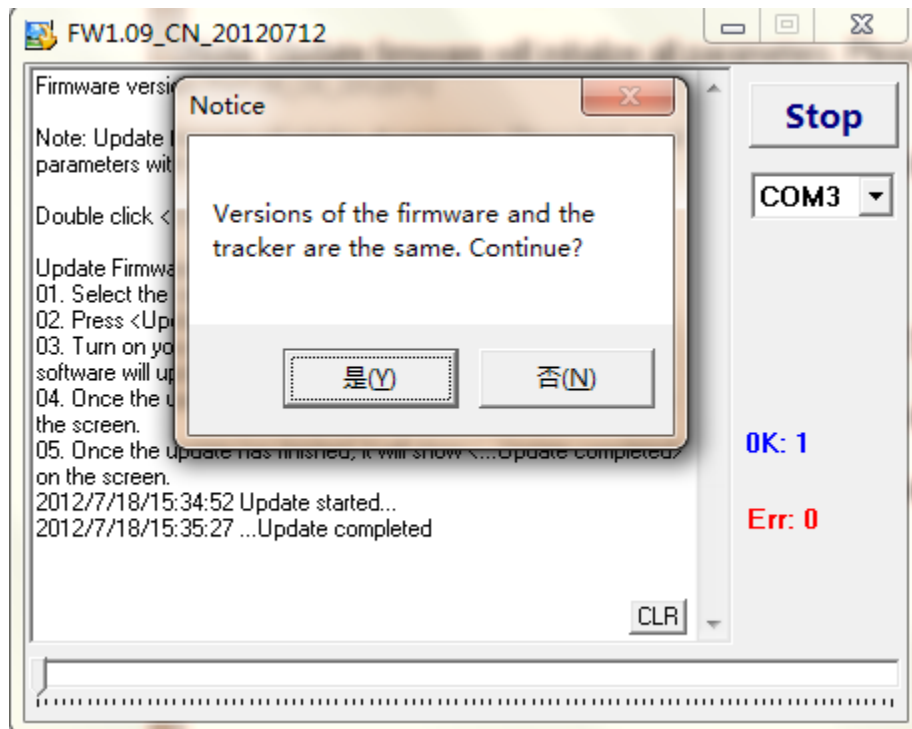
|             |                        |               |                          |
|-------------|------------------------|---------------|--------------------------|
| File Name   | MEITRACK A21 Update    | Creator       | Kyle Lv                  |
| Project     | A21                    | Creation Date | 2012-07-16               |
|             |                        | Update Date   | 2013-06-26               |
| Sub Project | Accessory Update Guide | Page          | 5 of 6                   |
| Revision    | V1.1                   | Confidential  | External Documentation 档 |

## 6. Upgrade

Please select the right com port (e.g. COM3), and click **Update**, A21 will be upgraded automatically. Progress bar will move, till the end, it shows "Update completed". Upgrade is finished.



|             |                        |               |                          |
|-------------|------------------------|---------------|--------------------------|
| File Name   | MEITRACK A21 Update    | Creator       | Kyle Lv                  |
| Project     | A21                    | Creation Date | 2012-07-16               |
|             |                        | Update Date   | 2013-06-26               |
| Sub Project | Accessory Update Guide | 页 Page        | 6 of 6                   |
| Revision    | V1.1                   | Confidential  | External Documentation 档 |



Notes: If upgrade fails:

1. Please check whether the USB232 cable is from our company. Only our USB232 cable will work;
2. Please check whether the USB232 driver is installed;
3. Please check whether right com port is selected;
4. Please check the connection between A21 and PC;
5. Please check whether the power button is switched to "ON" on the back of A21;
6. Please check whether A21 can be turned on after connecting to PC.

If any doubt, please email us [info@meitrack.com](mailto:info@meitrack.com), we will be at your service.